

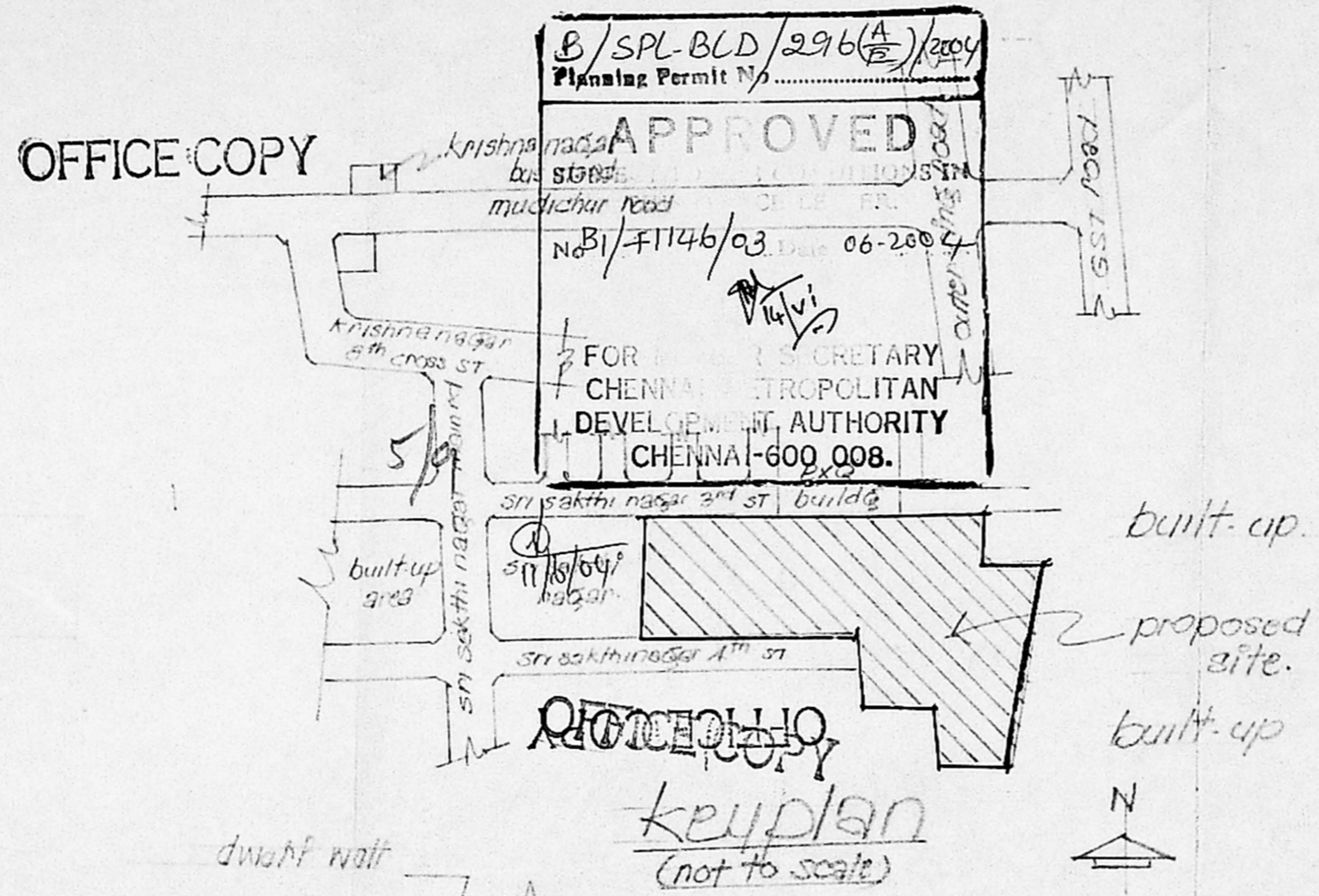
L/29/2003

V/S  
1/2

tamil nadu  
slum clearance board

proposed constn. of  
tenements in s. no. 12/1A & 12/3B  
at peerkankaranai village,  
tambaram taluk  
kancheepuram district

Revised Plan  
Dt: 17.2.2004



layout of house sites  
peerkankaranai village  
appd by mmda/cide  
PPD/LO No. 145/93/13.12.93

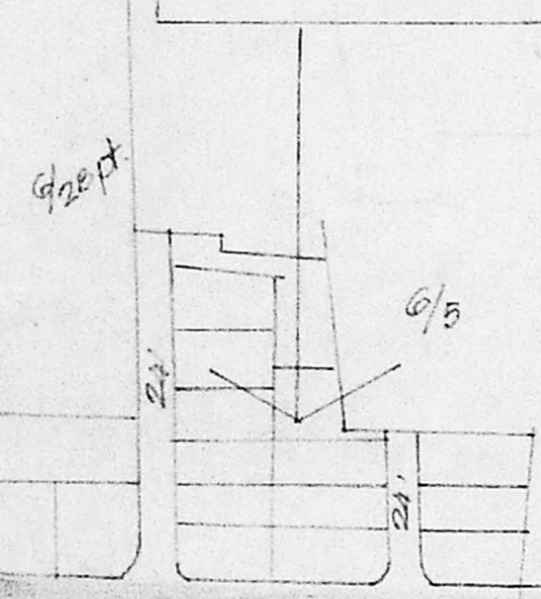
reference: CMDA (B) / No. 1  
as per td: 3/2001  
C.No. B1/41146/2003  
3 storeys  
plot area: 21.14 m<sup>2</sup>/unit  
Scrutiny  
P. A. 11  
total no. of blocks  
total no. of tenement: 11 x 18 = 198 nos.  
area details:  
A.P. 8/2/2004  
D.P.

extent	0.66 hect.	
density	300 dws/hect.	
plot coverage	21.4 %	
F.S.I	0.63	
land use details:		
use	area in hect	%
1. residential	0.408	61.8
2. park & c.p.s	0.089	13.5
3. public	0.063	9.5
4. roads	0.100	15.2
total	0.660	100%

SCALE: 1" = 66' 0" [1:300]

planning asst  
20/11/04  
deputy planner  
16/2/04

senior planner  
chief engineer



details of dwarf wall  
@ entrance

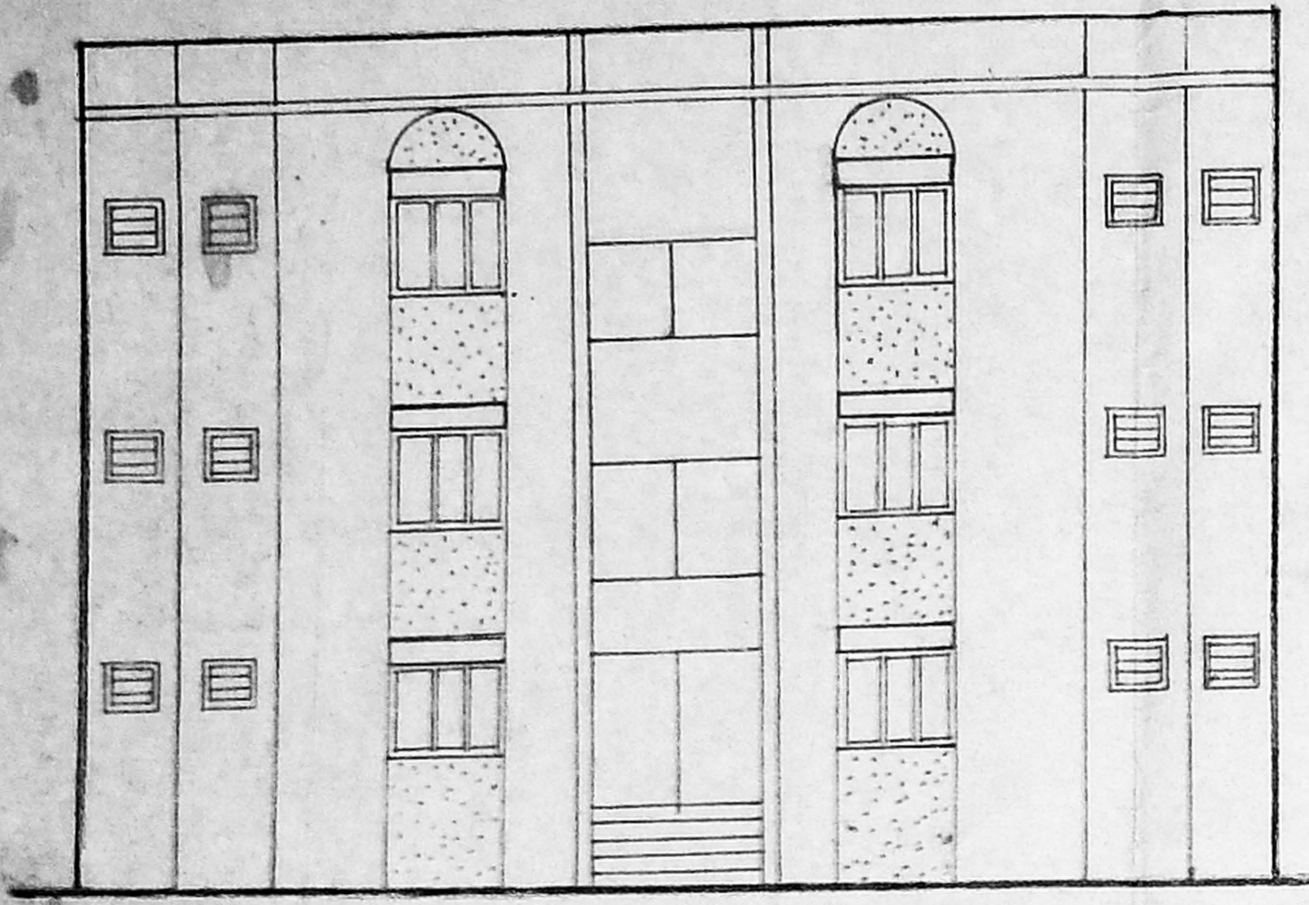
$$\frac{OSR}{2} \frac{27.4 + 35.4 \times 42 + 40.2}{2} =$$

$$31.4 \times 41.1 = 1290.54 m^2$$

cross section of  
rain water collection  
trench  
L/29/2003

T.S/8/2001

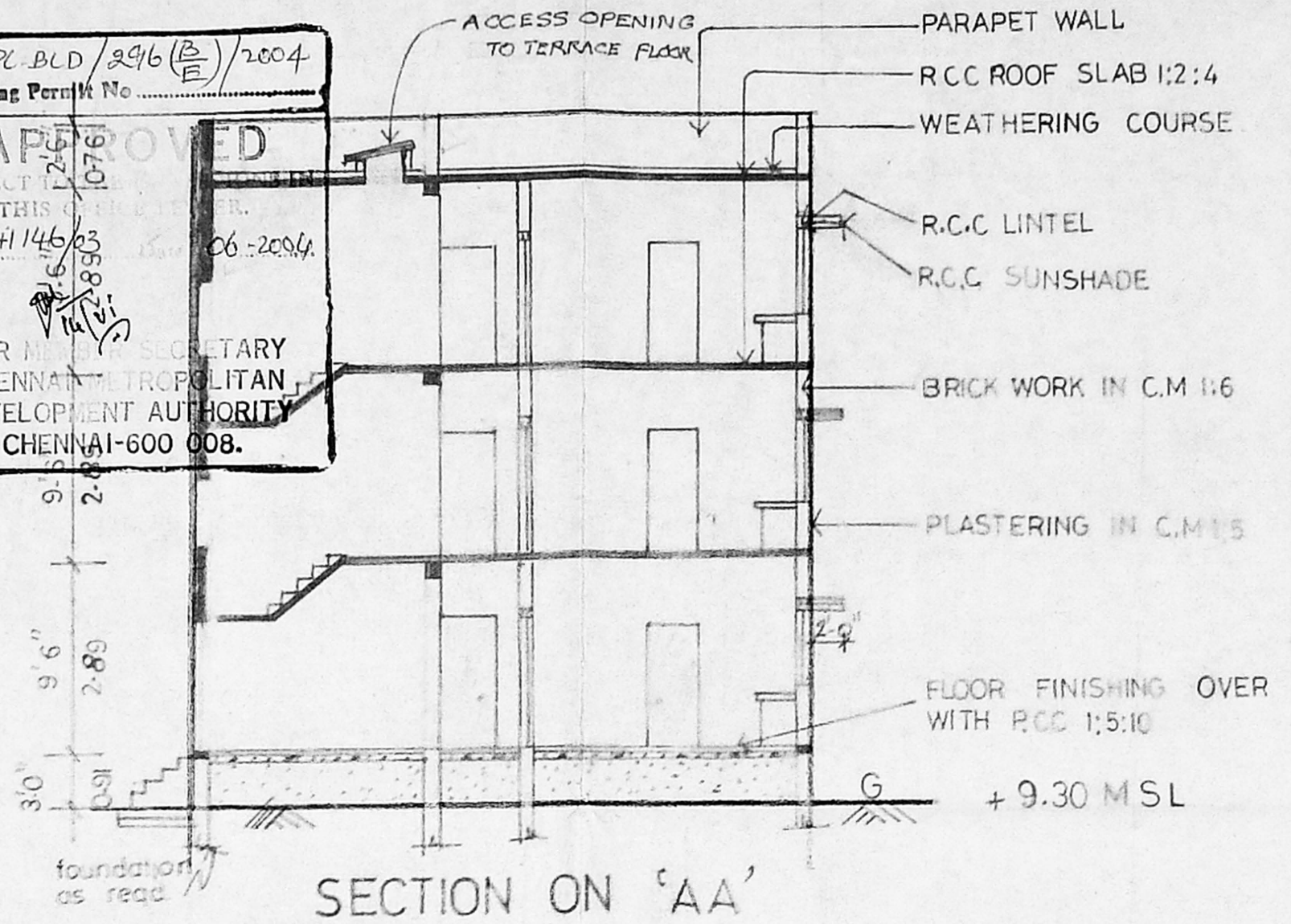
OFFICE COPY



FRONT ELEVATION

B/SPL BLD/296 (B)/2004  
 Planning Permit No. 076  
**APPROVED**  
 SUBJECT: THIS PROJECT  
 No. B1/41146/03 Dt. 06-2004  
 FOR THE SECRETARY  
 CHENNAI METROPOLITAN  
 DEVELOPMENT AUTHORITY  
 CHENNAI-600 008.

6/9  
 11/6/04



SECTION ON 'AA'

tamil nadu slum clearance board  
 Revised Plan  
 Dt. 17.2.2004

proposed construction of tenements of type design no. 3/2001 (3 storied)

scale: 1"=8'-0" (1:100)

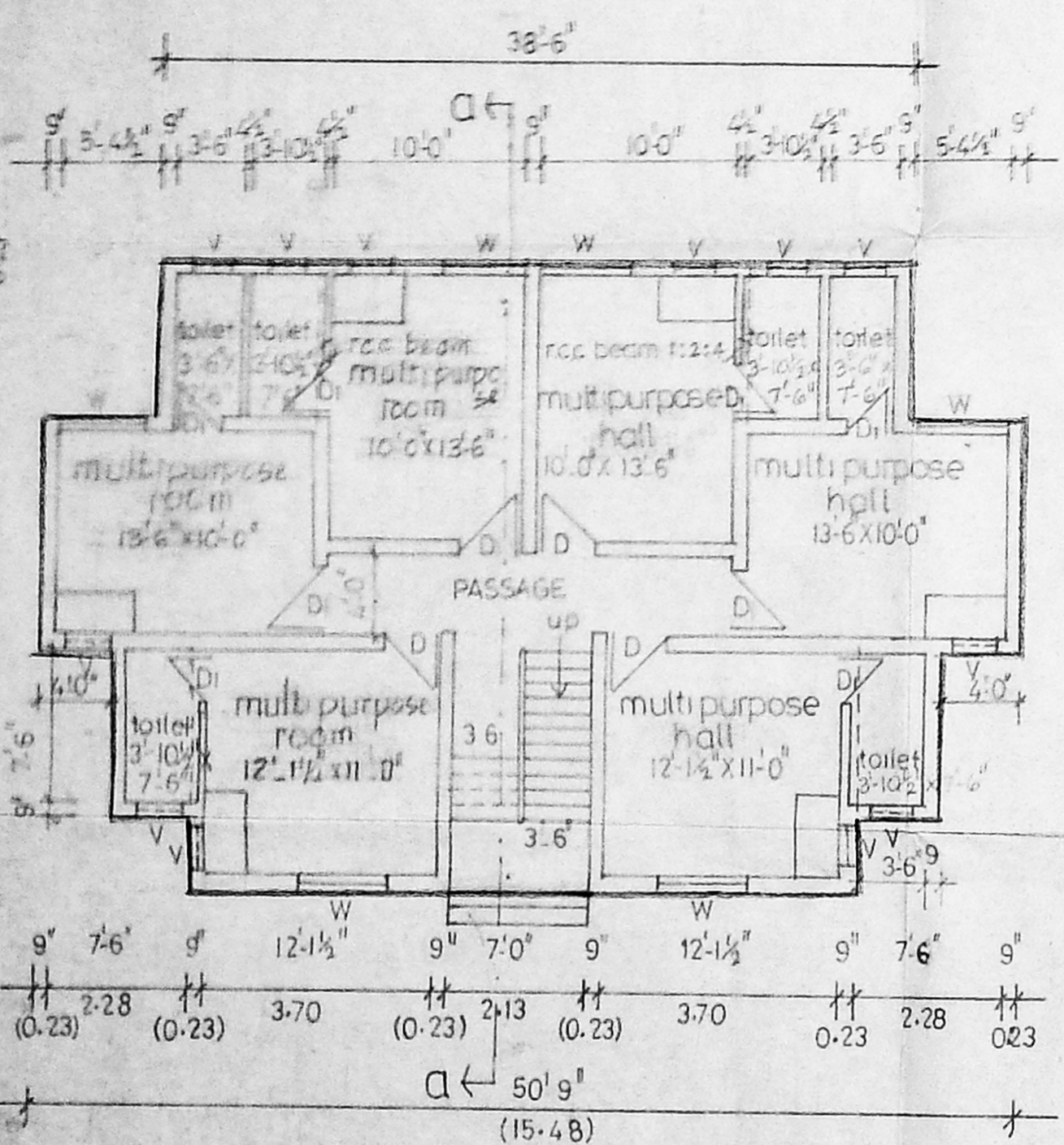
Joinery:

D Door	3'-0" x 6'-0" (0.91 x 1.78)
D <sub>1</sub> "	2'-6" x 6'-0" (0.76 x 1.83)
W window	4'-6" x 4'-0" (1.37 x 1.22)
V R.C.C. jally ventilator	2'-0" x 2'-0" (0.61 x 0.61)

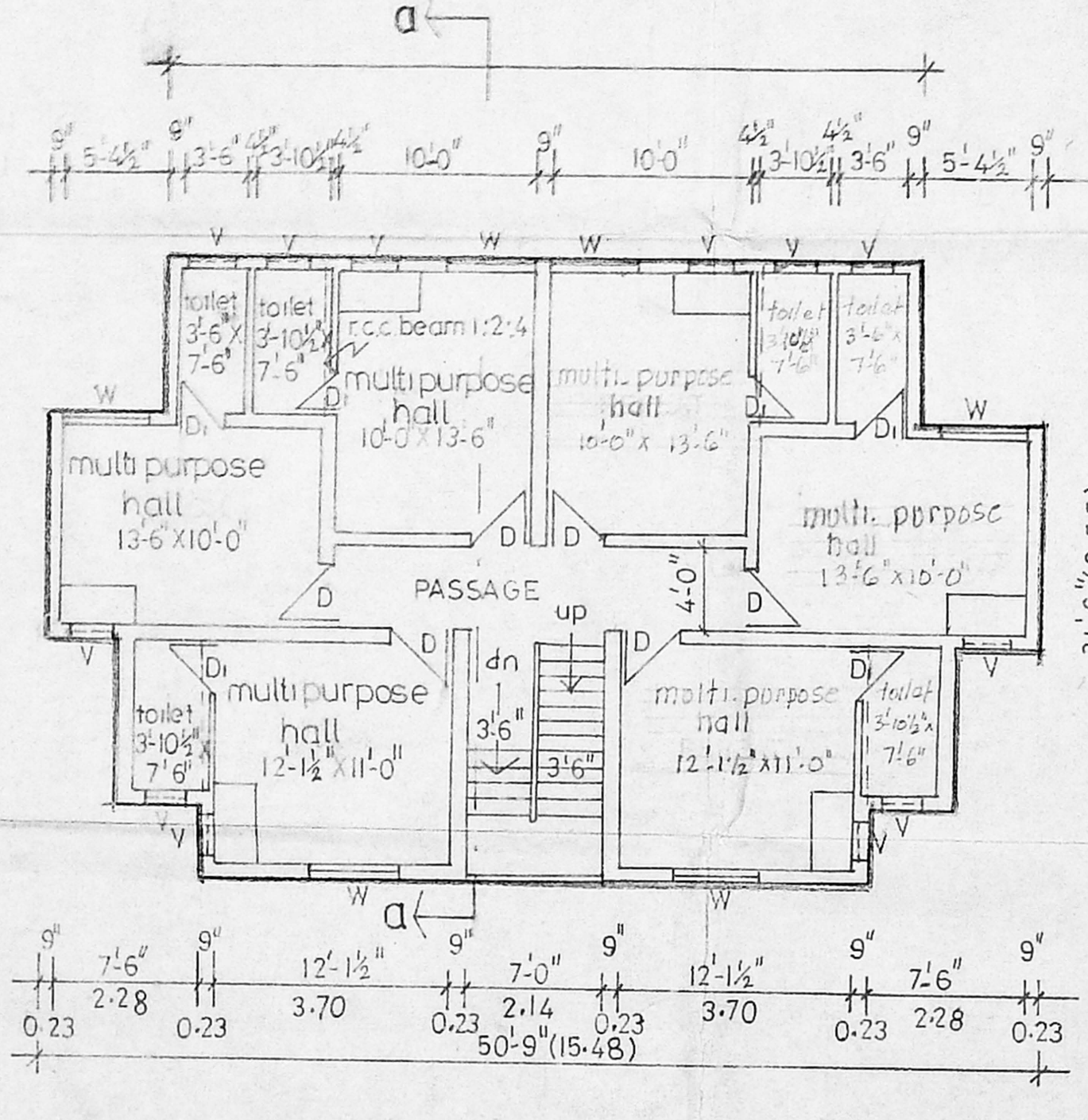
CMDA B1 - No. 1  
 B1/41146/2003  
 Scrutiny  
 P. A.

plinth area: 234 sq.ft (or) 21.74 sq.mt/unit

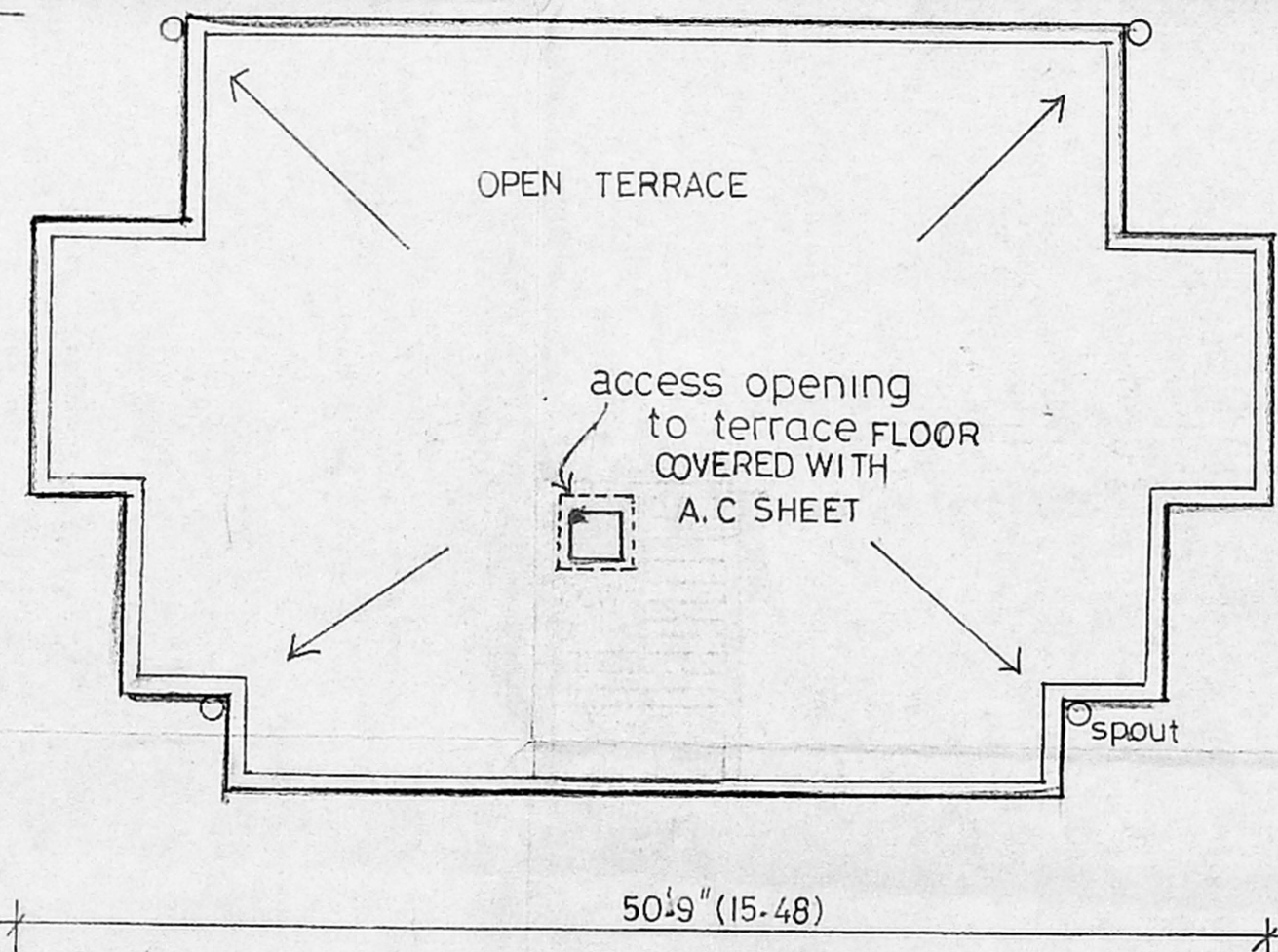
proposed type design for const. of tenements at peerkankaranai village in s.no.12/a & 12/30, tambaram taluk, kanchi-puram district.



GROUND FLOOR PLAN



FIRST AND SECOND FLOOR PLAN



TERRACE FLOOR PLAN

/true copy/

asst. planner

sd \*\*\* dt. 4-07-2001  
 planning asst. asst. planner deputy planner

traced by M. Muthu  
 senior planner chief engineer

T.S/8/2001

OFFICE COPY

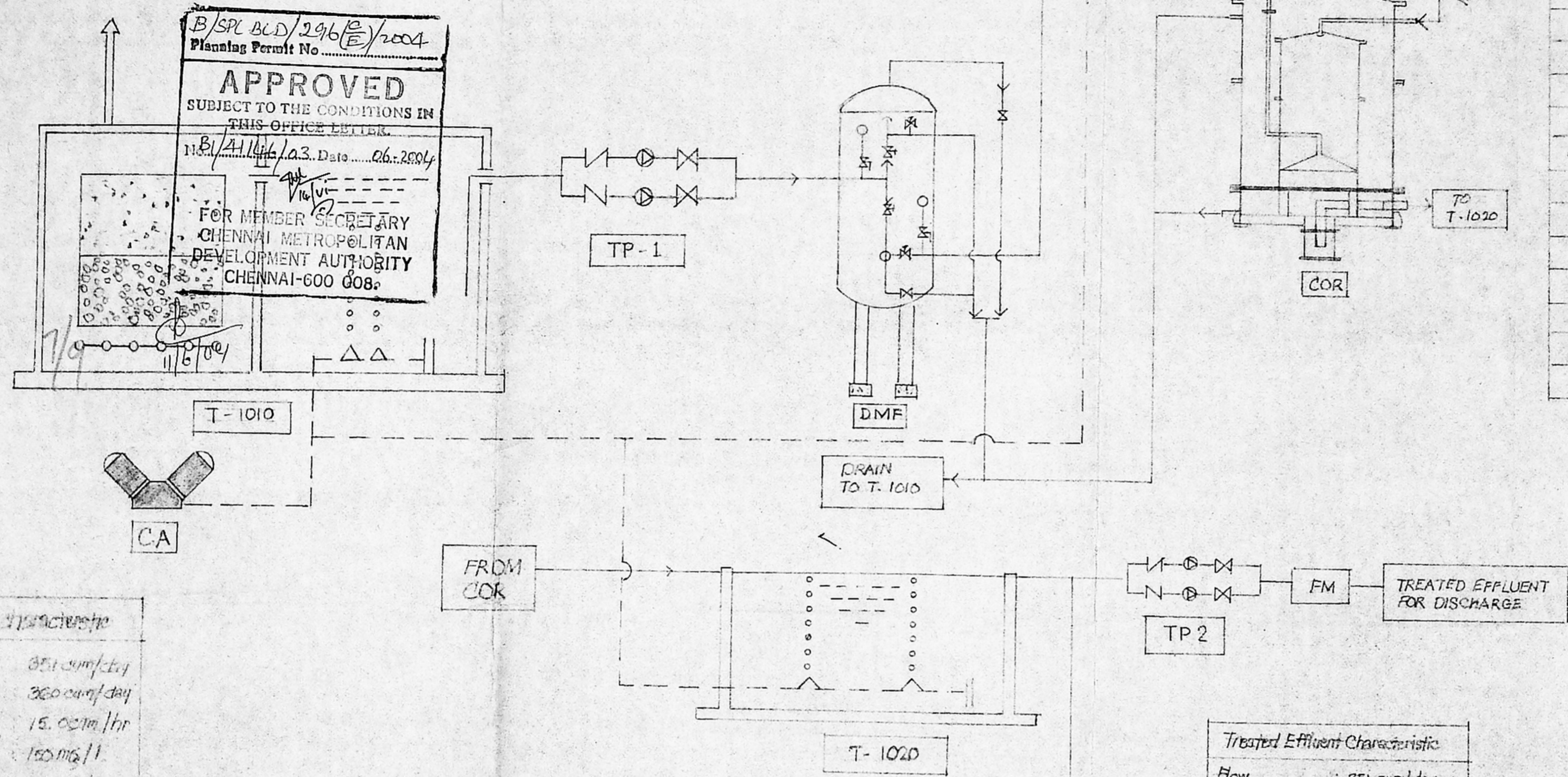
B/SPL BLD/29/6(E)/2004  
Planning Permit No.

**APPROVED**  
SUBJECT TO THE CONDITIONS IN  
THIS OFFICE LETTER.

No. B1/A1/14/0.3. Date 26.2.2004

FOR MEMBER SECRETARY  
CHENNAI METROPOLITAN  
DEVELOPMENT AUTHORITY  
CHENNAI-600 008.

RAW SEWAGE  
FLOW: 150 M<sup>3</sup>/HR



symbol	abbreviation
T	tank
TP	transfer pump
TDS	total dissolved solids
SS	suspended solids
BOD	bio-chemical oxygen demand
COD	chemical oxygen demand
DMF	dual media filter
M	ball valve
⊙	working pump
N	non-return valve
⊗	diaphragm valve
FM	flow meter
△	snap cap diffuser

CMDA (B) No. 1  
C. No. P. V. A. 146 / 2003

A.P. 3/16/04

D.R.

Treated effluent characteristic

Flow	: 351 cum/day
plant capacity	: 360 cum/day
flow	: 15.0 cum/hr
SS	: 150 mg/l
BOD	: 300 mg/l
COD	: 550 mg/l
TDS	: 1000-1200 mg/l

Treated Effluent Characteristic

Flow	: 351 cum/day
Plant Capacity	: 360 cum/day
flow	: 15.0 cum/hr
SS	: 150 mg/l
BOD	: 300 mg/l
COD	: 550 mg/l
TDS	: 1000-1200 mg/l

not to scale

tamil nadu slum clearance board

sewage treatment plant  
general flow sheet.

proposed construction of  
tenements in s.no. 12/1A & 12/3B  
at peerkankaranai village,  
tambaram taluk,  
kancheepuram district.

licensed plumber

*[Signature]*  
for chief engineer

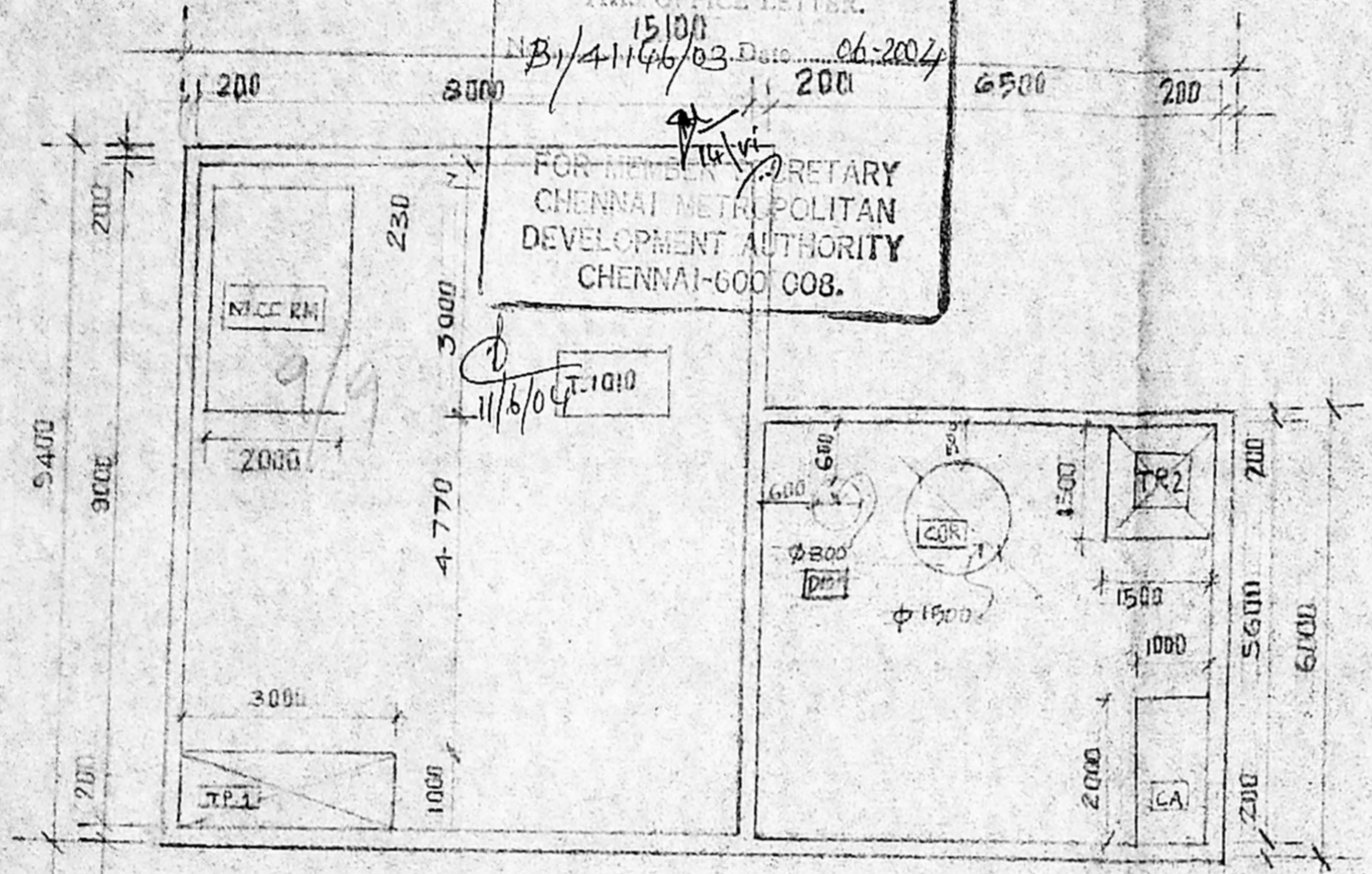
Sl. No.	Tag No.	name of unit	nos	capacity
1	TP-1	raw sewage transfer pumps	2	22.5 cum/hr @ 8 m/h
2	DMF	dual media filter	1	4.5 cum/hr
3	COR	contact oxidation reactor	1	4.5 cum/hr
4	TP-2	treated effluent transfer pumps	2	22.5 cum/hr @ 8 m/h
5	CA	connect to sewer air	1	25 dia x 2 hr

Sl. No.	Tag No.	name of the unit	nos	size in meters
1	T-1010	collection tank (aerobic filter)	1	9.0 x 8.0 x 5.0 M + 0.6 (FB)
2	T-1020	treated effluent collection tank	1	6.5 x 5.6 x 5.0 M + 0.6 (FB)



OFFICE COPY

B/SPL-BLD/296(F)/2004  
Planning Permit No. (E)  
**APPROVED**  
SUBJECT TO THE CONDITIONS IN THIS OFFICE LETTER.  
15101  
B1/41146/03 Date: 06-2004  
FOR NEWLY SECRETARY  
CHENNAI METROPOLITAN  
DEVELOPMENT AUTHORITY  
CHENNAI-600 008.



tamil nadu slum  
clearance board.

CMDA (B) / No. /  
C. No. B1/41146/2003  
Asst.  
Scrutiny  
P.A.  
A.P. 3/6/04  
D.P.

Drawing title:  
sewage treatment plant  
equipment layout

proposal:-  
proposed construction of tenements  
in S.No. 12/1A & 12/3B at peerkankaranai  
village, tambaram taluk,  
kancheepuram district.

Equipment schedule (mechanical):-

S.No	Tag No	Name of unit	NOS	Capacity
1.	TP-1	RAW sewage transfer pumps	2	22.5 cum/hr @ 8 m/h
2.	DMF	Dual media filter	1	4.50 cum/hr
3.	GQR	Carbon oxidation reactor	1	4.5 cum/hr
4.	TP-2	Treated effluent transfer pump	2	22.5 cum/hr @ 8 m/h
5.	CA	Compressed Air	1	25 cfm x 2 HP

Equipment schedule (civil)

Sl.No	Tag No	Name of the unit	NOS	Size in meters
1	T-1010	collection tank/Anaerobic upflow filter	1	9.0 x 8.0 x 5.0 M (LD) + 0.60 M (FB)
2	T-1020	Treated effluent tank	1	6.5 x 6.0 x 5.0 M (LD) + 0.60 M (FB)
3	M.C.C ROOM		1	3.0 x 2.0 x 1.8 M (TH)

Notes:  
All dimensions are in  
milli metres.

Licensed plumber:

*Signature*  
12/3/2004  
FOR, Chief Engineer.

Scale:- 1:100